



munisense

Water Level Loggers

The wireless water level meters send all measurement data via the mobile LTE-M network to the Munisense INSIGHTNOW™ platform.

The future-proof LTE-M technology ensures lower energy consumption as standard and has facilities for even more energy savings. The data connection via the LTE-M network is more reliable due to better network coverage through roaming.

Measurement data can be retrieved at any time via smartphone, tablet or web browser. Both the management per measuring point as well as the entire measuring network is simple using the powerful platform.

Future-proof and autonomous

The energy-efficient water level meters can operate for many months or years on the existing battery, depending on the number of measurements and the update frequency with the INSIGHTNOW™ platform.

The meters are suitable for networks where immediate response to measurement data is required or where it is used as a logger.

Remote management

The measurement and reporting intervals per meter can be set remotely in the INSIGHTNOW™ platform. All meters can be fully managed and updated remotely.

In addition to alarms for level changes, any malfunctions in the meters, e.g. battery or data transmission, are also reported in the INSIGHTNOW™ platform, so that they are immediately identified and resolved quickly.

Integrated GIS information

Map-driven user interface with GIS layers like buildings, subsurface, elevation map and legend. Fully integrated with dashboards for measuring network, location and measuring point and with graphs including ground level and manual measurements.

Easy installation

Years of operation on single battery

Sample interval from 5 sec. to 1 day

Adjustable Water Level Alarms

Automatically validated data

Integrated GIS information



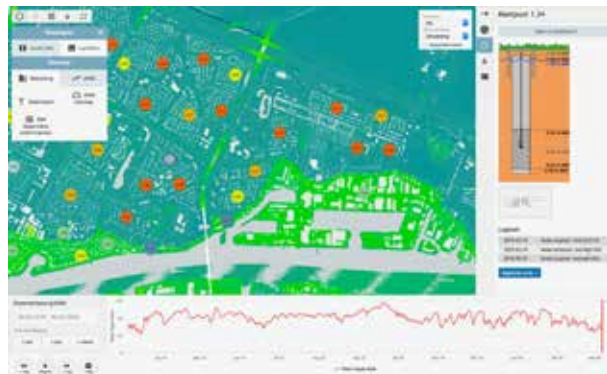
Specifications water level loggers		LV8
Type measurement specifications		
Water pressure		
• Range	4, 10, 20 m H ₂ O (absolute)	
• Resolution	0.01 % FS	
• Precision	± 0.1 % FS (typical)	
• Long term stability	± 0.02 % FS *	
• Maximum pressure	3x range	
Water temperature		
• Range	-20 - 50 °C	
• Resolution	0.4 °C	
• Precision	± 0.4 °C (max.)	
• Accuracy, calibrated	0 °C (at 20°C)	
Atmospheric pressure (requires optional valve)		
• Range	300 - 1100 hPa	
• Resolution	0.01 hPa	
• Precision	±0,4 hPa	
• Accuracy, calibrated	±0,4 hPa	
Timestamp accuracy		
< 0.5 sec/day		
Sampling, measurement interval		
5 sec. - 24 hours		
Logging capacity		
25.000 measurements		
Management information		
• Battery voltage	yes	
• Radio quality (RSSI) in dBm	yes	
Environmental conditions		
Temperature	-20 - 60 °C	
Relative humidity	0 - 99 %	
Ingress protected housing	IP67	
Supplied sensor		
Cable length	5 m **	
Material		
• Cable material	PE-HD	
• Sensor body	Stainless Steel 316L	
• Sensor	Stainless Steel or Al ₂ O ₃ Ceramics	
• Ingress protection	IP68	
• Identification	unique, lasermarked Stainless Steel	
• Suitable for drinkingwater	yes	
Diameter	18 mm	
Energy		
Battery (non rechargeable)	Li/SOCI2	
Capacity	19 Ah	
Replaceable	yes	
Voltage	3,6 V	
Operating time, depending on the quality of the connection, the selected measurement and reporting interval, approx.		
7 years		
Communication		
LTE-M and NB-IoT	both integrated	
Antenna	integrated	
OTA (Over The Air) updates	yes	
Options		
Pressure valve (atmospheric pressure, relative sensor)		
External puck antenna		
Dimensions and weight		
Diameter body and cap	Ø 50 mm and Ø 62 mm	
Length body incl. cap	180 mm	
Weight body and sensor	500 grams	

* After 30 days, over the rest of the entire lifespan - see EC EN 60770-1

** Other cable lengths upon request: 10, 15, 20 m or another length.

Everything at a glance

The portal can interpolate water levels or dewatering depth on the map. Even the values from the graph can immediately be visualized on the map in time.



Above: **example of a user portal with at a glance**

- metadata of the selected measurement point
- time series of dewatering depth of the measurement point
- map with color coding per measurement point and AHN2 height map



LV water level meters;
available for use
with 1 or 2 sensors

About Munisense

Munisense develops, produces, supplies and manages innovative measurement solutions for businesses and governments. Solutions that give stakeholders direct online insight into noise, water quality, water levels and air quality. The information is online available at any time for visualization, analysis or periodic reports. This way managers and policymakers can measure in real time; remotely, reliable and smarter.

munisense
INSIGHTNOW™

Munisense BV
Touwbaan 38 - A0.08
2352 CZ LEIDERDORP
The Netherlands
info@munisense.com
T +31(0)71-711 4623
www.munisense.com